

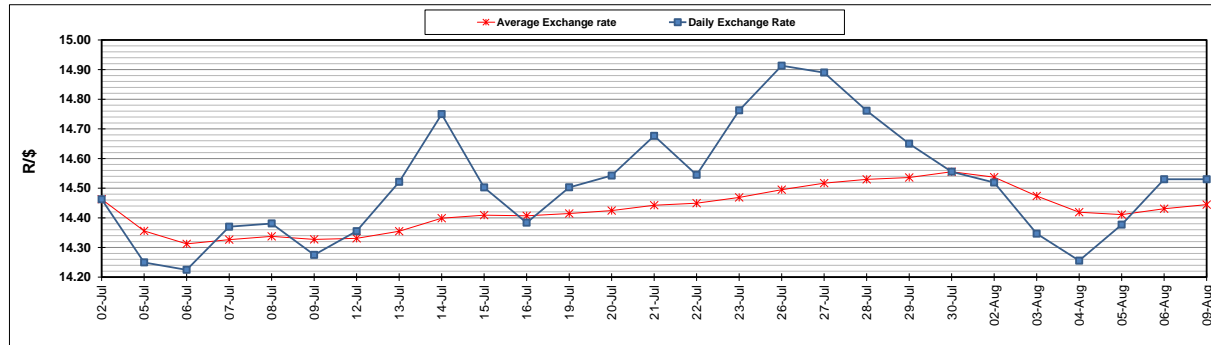
	PETROL 95 ULP	PETROL 93 ULP & LRP	DIESEL 0.05%	DIESEL 0.005%	ILL. PAR.
GAUTENG PUMP PRICE (SA c/l) AS FROM 04/08/2021	1,830.000	1,811.000	-	-	-
WHOLESALE PRICE (SA c/l) AS FROM 04/08/2021	-	-	1,564.200	1,566.600	963.488
SINGLE NATIONAL MAXIMUM RETAIL PRICE	-	-	-	-	1,217.000
BASIC FUEL PRICE - 09/08/2021 (SA c/l)	792.537	780.074	727.971	730.577	713.355
PRESS RELEASE CONTRIBUTION TO BFP 04/08/2021 - 09/08/2021 (SA c/l)	827.590	818.590	770.630	773.030	750.128
UNIT OVER/(UNDER) RECOVERY - 09/08/2021 (SA c/l)	35.053	38.516	42.659	42.453	36.773
AVERAGE BASIC FUEL PRICE 30/07/2021 - 09/08/2021	809.581	796.669	745.278	748.051	729.927
AVERAGE UNIT OVER/(UNDER) RECOVERY 30/07/2021 - 09/08/2021	(18.171)	(14.259)	4.352	4.407	(1.227)

### ANALYSIS MOVEMENT OF AVERAGE OVER/(UNDER) RECOVERY

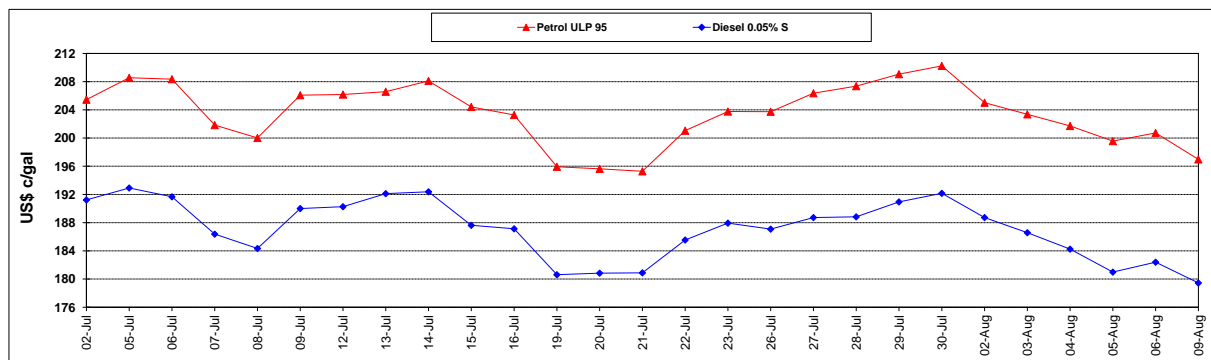
	PETROL 95	PETROL 93	DIESEL 0.05%	DIESEL 0.005%	ILL. PAR.
- MOVEMENT IN INTERNATIONAL PRODUCT PRICES	(23.277)	(19.283)	(0.348)	(0.310)	(5.831)
- MOVEMENT IN EXCHANGE RATE	5.106	5.024	4.700	4.718	4.603
AVERAGE UNIT OVER/(UNDER) RECOVERY 30/07/2021 - 09/08/2021	(18.171)	(14.259)	4.352	4.407	(1.227)

### R/\$ EXCHANGE RATE - (R/\$14.5300- 09/08/2021)

#### EXCHANGE RATE USED IN BASIC FUEL PRICE



#### INTERNATIONAL PRODUCT PRICES OF BASKET USED IN BASIC FUEL PRICE



#### BASIC FUEL PRICE IN SA CENTS PER LITRE

